

Rainfall Assessment of June 2000

The month of June is characterized by two climatic extremes over Eritrea. Dry and hazy weather domination with high temperature during the first two dekads and wet condition, hence, the onset of the summer (Keremti) rain during the third dekad of the month. First and second dekad of June 2000 were generally dry as per the normal condition. A significant increase in rainfall amount and distribution has been observed during third dekad of June. Therefore, isolated to scattered rainshowers fell over most summer/keremti rain-benefiting parts of Eritrea during this period. Cumulative rainfall during this month ranges from 85mm over Emnihaili (zoba Debub) to 3mm over Sheib (zoba Seminawi Keih Bahri).

Highest rainfall during this dekad were received over: Emnihaili 85, Halhal 70, Areza 65, Elabered 60, Embaderho 58, Adi-Quala 56 and Mekerka 54mm. Percentage of normal cumulative monthly rainfall ranged from 32% at Keren (zoba Anseba) to 184% at Adi-Caih (zoba Debub). Comparison of rainfall during June 2000, 1999, 1998 and long year mean for selected stations and spatial distribution of rainfall during this month is shown in Fig.1 and Fig 2 respectively.

The Normalized Difference Vegetation Index (NDVI) images of June 2000 showed in figure 3 indicates presence of low vegetation levels over the High-grounds, Eastern Escarpments and South-western lowlands of the country.

Fig 1. Cumulative Rainfall during June.

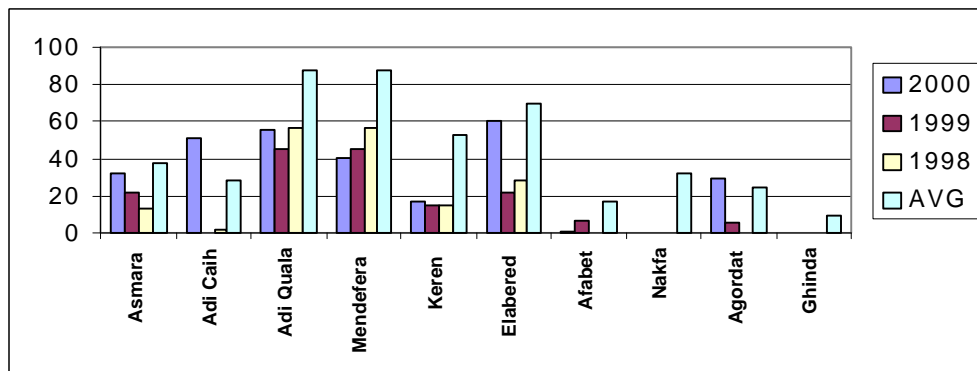


Fig. 2 Distribution of Rainfall for June 2000

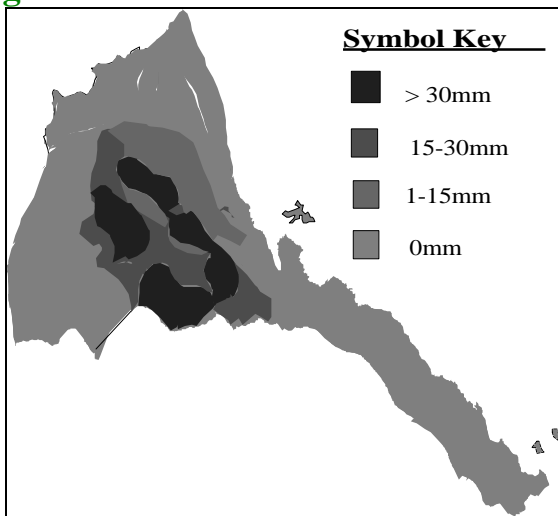


Fig. 3 Vegetation Map for June 2000

